

# ***Neosys Technology Inc.***

## ***Nuvo-9000 series BIOS update manual***

***Published Dec. 23th, 2022***

The following procedure describes the Nuvo-9000 BIOS update process.  
Before we start, please make sure you have done the following:

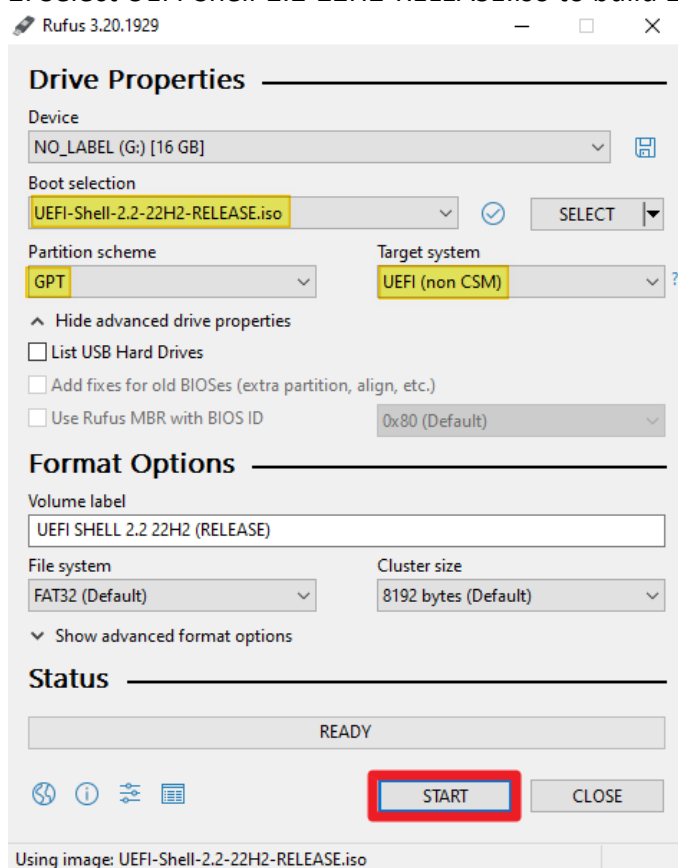
### A. Take Note of Any BIOS Configurations

All BIOS settings will be reset to default so it is advised to take note of any BIOS configurations you may have such as ACHI mode, Wake on LAN, Power on after power failure, etc.

### B. Boot into EFI-shell Environment

Please prepare a bootable **EFI** USB drive before you begin the BIOS update process.

1. Download [rufus](#) tool and [UEFI shell ISO](#) file.
2. Select UEFI-Shell-2.2-22H2-RELEASE.iso to build EFI bootable USB drive.



3. Confirm the efi folder is in the USB drive.



### C. Acquire BIOS File

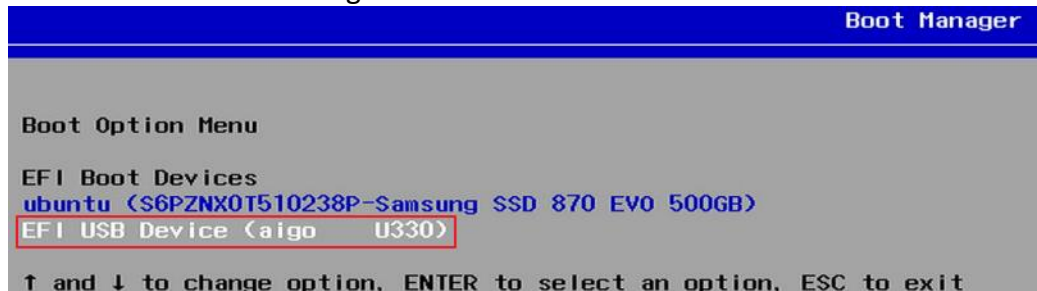
The update BIOS file can be acquired from Neosys Technology technical support staff.

### D. BIOS Update Procedure

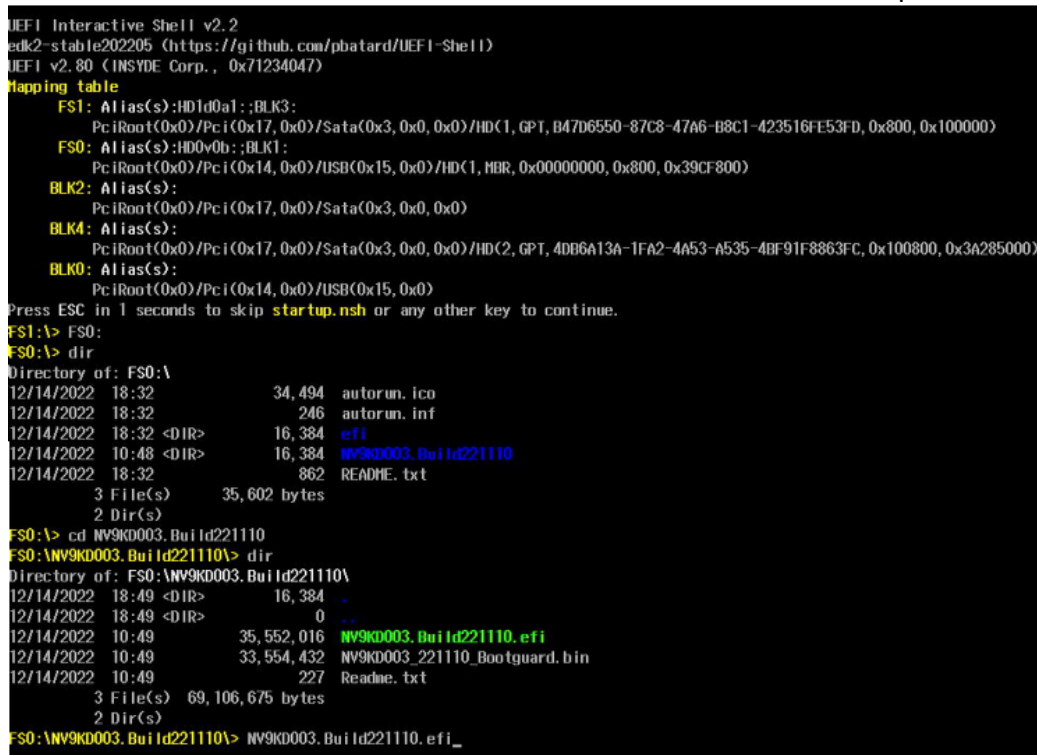
1. Copy Nuvo-9000 BIOS file to the efi bootable USB drive.



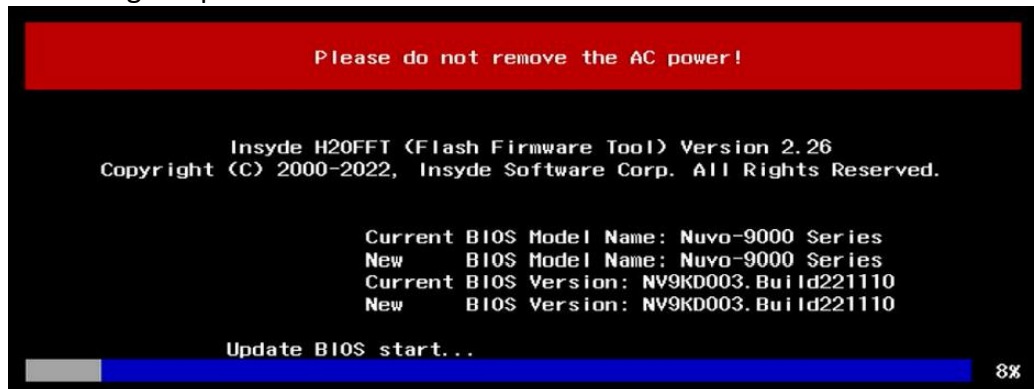
2. Press F12 to boot manager and select EFI USB Device



3. Go to BIOS file folder and execute NV9KD003.Build221110.efi to update BIOS.



#### 4. Starting to update BIOS.




5. Upon reboot, please press “F2” to enter the BIOS setup utility.

6. Once you have entered the BIOS setup utility, press “F9” to “Load Optimal Defaults”.

7. Configure any previous configurations you may have such as ACHI mode, Wake on LAN, Power on after power failure, etc. If not, you may skip this step.

8. Please press ‘F10’ to save and exit.

 **WARNING** Should error message(s) occurred during the BIOS update process, please repeat the BIOS update procedure again. An incomplete BIOS update process will result in the system failing to boot. During the BIOS update process, DO NOT power off the system or disconnect the AC power.